

**TABLE 1  
PALMER LAKE 2021 DEEP BASIN WATER QUALITY DATA**

Date	Sample Depth (feet)	Temperature (°F)	Dissolved Oxygen (mg/L) <sup>1</sup>	Total Phosphorus (µg/L) <sup>2</sup>
22-Jul-21	1	80	11.7	34
22-Jul-21	20	61	0.1	33
22-Jul-21	40	52	0.0	30

**TABLE 2  
LONG LAKE 2021 DEEP BASIN WATER QUALITY DATA**

Date	Sample Depth (feet)	Temperature (°F)	Dissolved Oxygen (mg/L) <sup>1</sup>	Total Phosphorus (µg/L) <sup>2</sup>
22-Jul-21	1	79	12.8	33
22-Jul-21	16	68	0.6	36
22-Jul-21	32	55	0.0	39

**TABLE 3  
PALMER-LONG LAKES 2021 SURFACE WATER QUALITY DATA**

Date	Lake	Chlorophyll-a (µg/L) <sup>2</sup>	Secchi Transparency (feet)
22-Jul-21	Palmer	12	2.5
22-Jul-21	Long	14	3.5

**TABLE 4  
PALMER-LONG LAKES 2021 TRIBUTARY DATA**

Date	Tributary	Discharge (cfs) <sup>3</sup>	Total Phosphorus (µg/L) <sup>2</sup>
22-Jul-21	Swan Creek	54.1	41
1-Aug-21	Little Swan Creek	4.1	22

1 mg/L = milligrams per liter = parts per million.

2 µg/L = micrograms per liter = parts per billion

3 cfs = cubic feet per second.

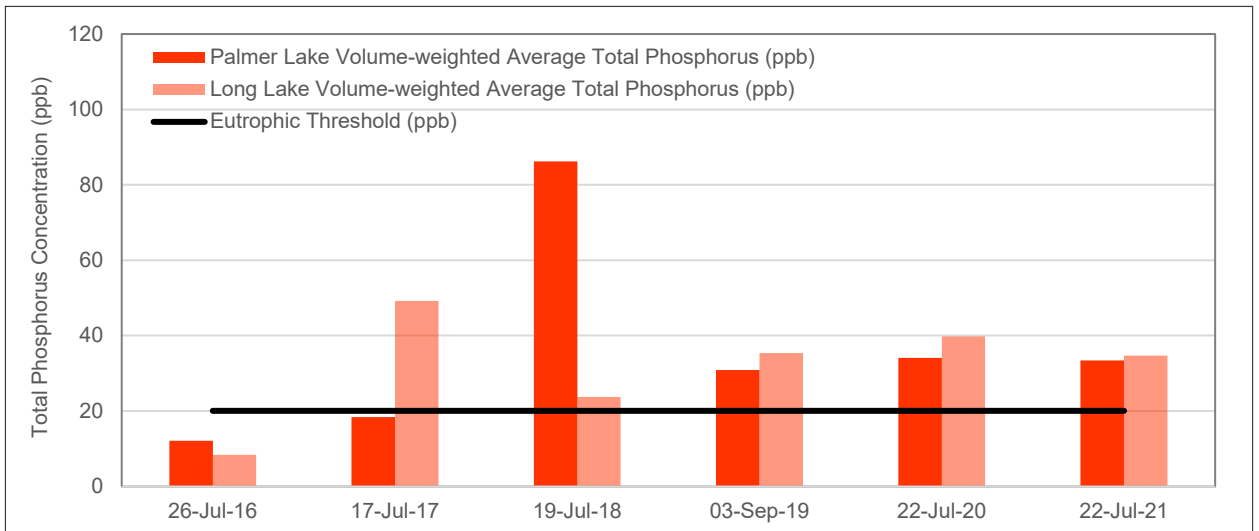


Figure 1. Volume-weighted average total phosphorus concentrations, 2016 - 2021.

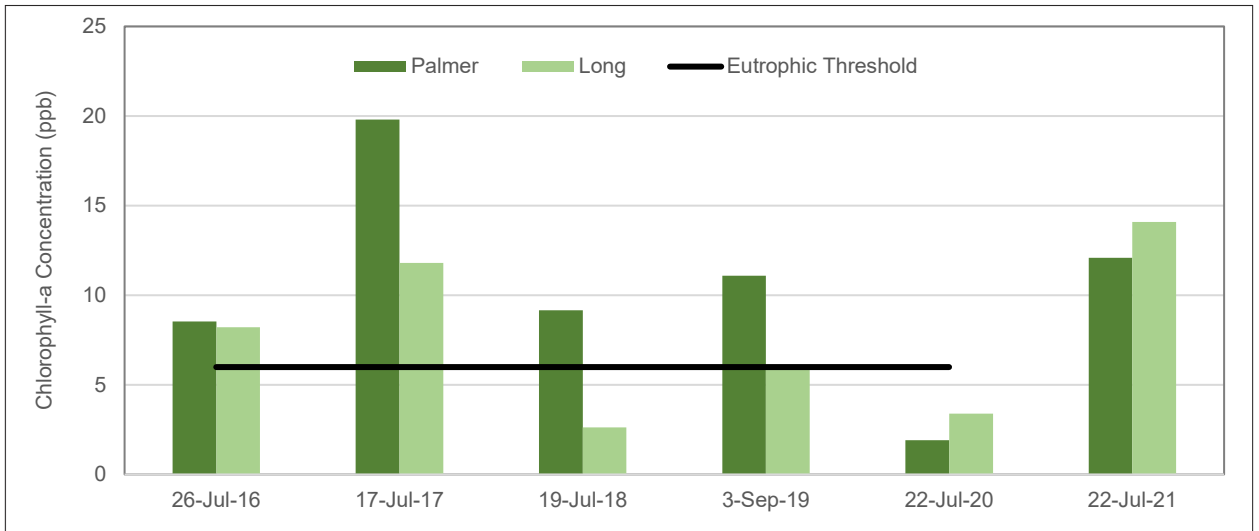


Figure 2. Chlorophyll-a concentrations, 2016 - 2021.

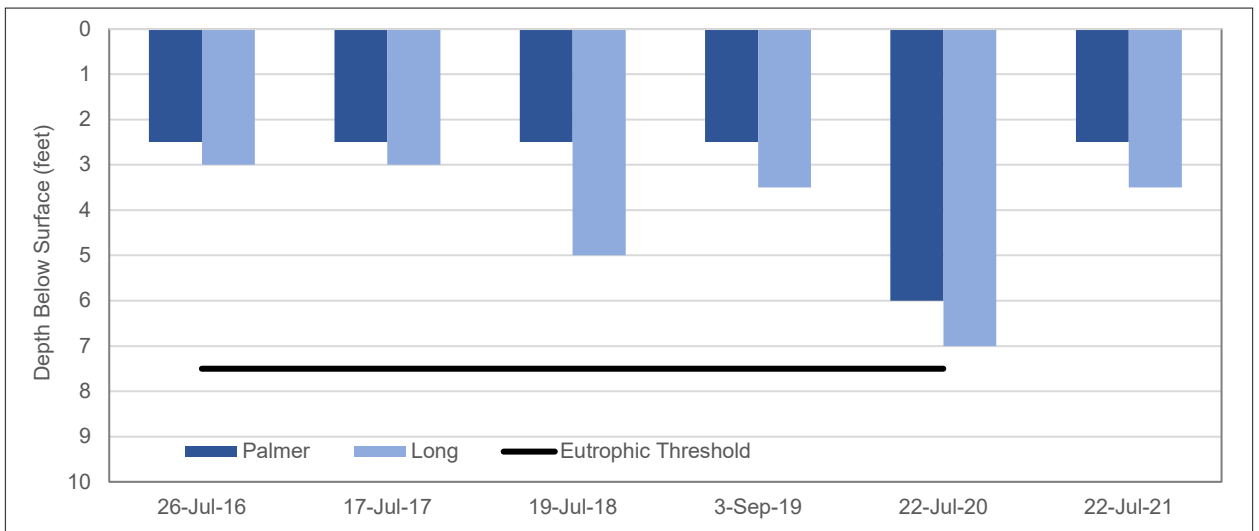


Figure 3. Secchi transparency measurements, 2016 - 2021.